

## Person-Centered Resource Guide

Person-centered planning ensures that individuals accessing health and social services are equal partners in planning, developing, and monitoring their care to make sure it meets their needs. This means putting individuals at the center of decisions and seeing them as experts, working alongside professionals to get the best outcomes.



Person-centered planning considers the individual's:

- Desires
- Values
- Family Situations
- Social Circumstances
- Lifestyles

All of which allows the team to work together to develop appropriate solutions.

### Person-Centered **PLAN**

The person leads the process, chooses who is part of that process, and allows them autonomy.

### Improved **OUTCOMES**

Enables the person to receive the supports and services that fulfill their desired outcomes.

### Informed **DECISIONS**

The person is given the information to direct the process and make informed decisions.

### Opportunity **FOCUSED**

Allows the focus to be on opportunities, rather than solely on challenges and problems.

## Links to Top Industry Resources

The National Center on Advancing Person-Centered Practices and Systems (NCAPPS) Resource Center

The Administration for Community Living's Person-Centered Planning

Cornell University's Yang-Tan Institute's Person Centered Planning Education Site

The Learning Community for Person-Centered Practices International Community

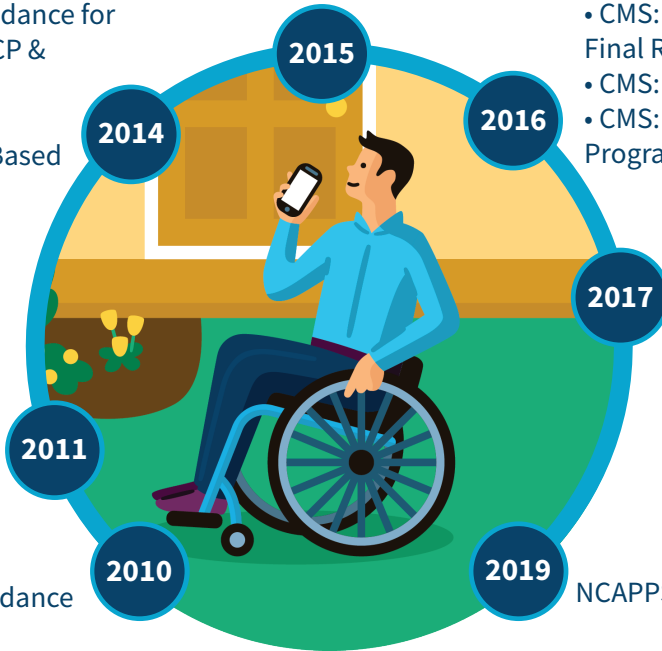
Minnesota Governor's Council on Developmental Disabilities "It's My Choice" Guide

# Person-Centered Planning Over the Years

- HHS: ACA Section 2402 (a) Guidance for Implementing Standards for PCP & Self-Direction in HCBS
- ONC: eLTSS Standards
- CMS: Home and Community Based Services Final Rule

CMS: Discharge Planning Proposed Rule

- SAMHSA: Criteria for Certified Community Behavioral Health Clinics
- CMS: Accountable Health Communities Funding Opportunity Announcement
- CMS: Medicaid and CHIP Managed Care Final Rule
- CMS: Long-Term Care Facilities Rule
- CMS: Person & Family Engagement Program



ACL: No Wrong Door Guidance

It's My Choice Guide

CMS: Home Health Policy Guidance

NCAPPS Resource Center

## Person-Centered, The MediSked Way



Streamlines critical care management processes from the assessment through planning, service authorization, record management, and documentation.

Offers comprehensive management of individual and employee information for Provider agencies, from service delivery through claim submission, audit, and reporting.



Combined with either MediSked Connect or MediSked Coordinate to empower individuals and their circles of support to communicate and manage critical information.

Enterprise-grade, secure, cloud-based interface engine and data warehouse that provides advanced analytics, population health reporting, and business intelligence.

